



****AVAILABLE FEBRUARY 2026****

****FURNISHED** **ONE BEDROOM**

CONVERSION APARTMENT** Arguably one of Jesmond's finest residential streets! A charming first floor apartment ideally located in the heart of Brandling Village Conservation Area on Burdon Terrace. Within walking distance to Newcastle City Centre, Burdon Terrace, a tree-lined avenue is perfectly placed close to the parade of shops on Clayton Road, Jesmond Metro Station and indeed the café culture of Jesmond.

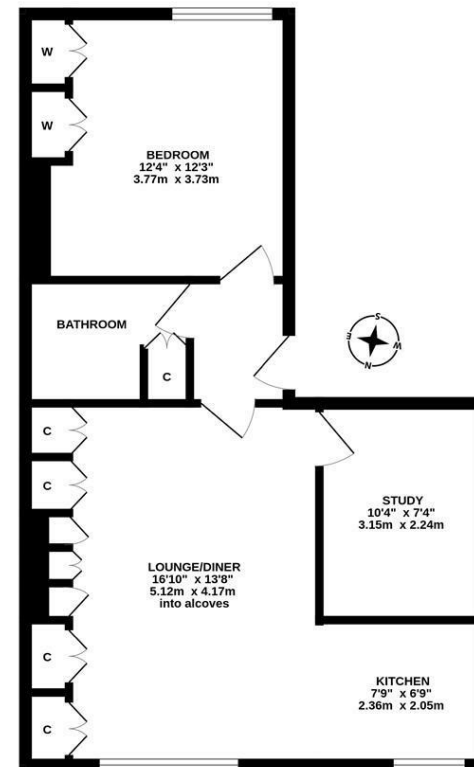
Accessed via a well kept communal entrance hall with stairs to all floors, the apartment is situated on the first floor and briefly comprises: entrance hall way leading to a bright lounge to the front with ample built in storage; open plan to a modern fitted kitchen with appliances; separate study/ sitting room just off the lounge; bathroom WC with three piece suite; large double bedroom to the rear with built in wardrobes. Externally there is off street residents parking at the rear, with further on street permit parking to the front. A great property that demands an early internal inspection, ideal for a professional couple or single professional occupant on a furnished basis.

Available 6th February 2026 | £995pcm | First Floor Conversion Apartment | 572 Sq. ft (53.1 m2) | One Double Bedroom | Open Plan Lounge/Diner | Bathroom WC | Open Plan Kitchen | Separate Study/ Sitting Room | Off Street Residents Parking | On Street Permit Parking | Conservation Area | Furnished | GCH | Council Tax Band: B | EPC Rating: C

£995 PCM



FIRST FLOOR
572 sq.ft. (53.1 sq.m.) approx.



TOTAL FLOOR AREA: 572 sq.ft. (53.1 sq.m.) approx.

Whilst every attempt has been made to ensure the accuracy of the floorplan contained here, measurements of doors, windows, rooms and any other items are approximate and no responsibility is taken for any error, omission or mis-statement. This plan is for illustrative purposes only and should be used as such by any prospective purchaser. The services, systems and appliances shown have not been tested and no guarantee as to their operability or efficiency can be given.
Made with Metropix ©2024

IMPORTANT NOTE: These particulars and the descriptions and measurements herein do not constitute representation and whilst every effort has been made to ensure accuracy, this cannot be guaranteed.

